



Add the 'wow' factor
with the Liniar bi-fold range

ECO Window
Systems

 **Liniar**

Add the wow factor to your home

Imagine being able to open up an entire wall of your room, creating space and letting fresh air and natural daylight flood into your home.

Whether you have a bedroom with Juliette balcony, a dining kitchen, a conservatory or an orangery, bi-folding doors can provide a stunning alternative to patio or French doors.

Liniar's bi-folding doors were the first fully bespoke PVCu bi-folds to be designed, engineered and made in the UK - and we believe they are still the best.

Available in a wide choice of opening configurations and colours, your Liniar bi-fold has ultra-slim sightlines, providing your room with a clean, modern appearance.

Safety features include the innovative low threshold option for family friendly and wheelchair use.

What's more, the Liniar bi-fold offers high energy efficiency, combined with the best security features on the market - bringing you a modern space-saving solution for your home that will definitely give it the 'wow' factor.



Better for the environment

Energy efficiency explained

One of the most effective ways you can save energy within your home is through installing energy efficient windows, doors and roofs.

Liniar frames outperform most of the other leading brands in the UK when it comes to thermal efficiency – mainly due to our innovative PVCu multi-chambered profile design.

The thermal efficiency of a door is measured in U-values, which demonstrate how effective the door is at preventing the transfer of heat into and out of a building.

The lower the U-value, the higher the doors' effectiveness at keeping the heat inside your home when it's cold outside.

The standard Liniar bi-folding door range can achieve a U-value of 1.3 W/m²K when fitted with cost effective double-glazed units, which means you'll be able to enjoy a warmer and quieter home as well as lower energy bills.

And for even greater thermal efficiency, the Liniar ModLok bi-folding range can be fitted with triple glazing, reaching an impressive U-value of 1.0 W/m²K



Add the 'wow' factor

Designed for today's challenges

The Liniar bi-folding door range is beautifully designed for modern living.

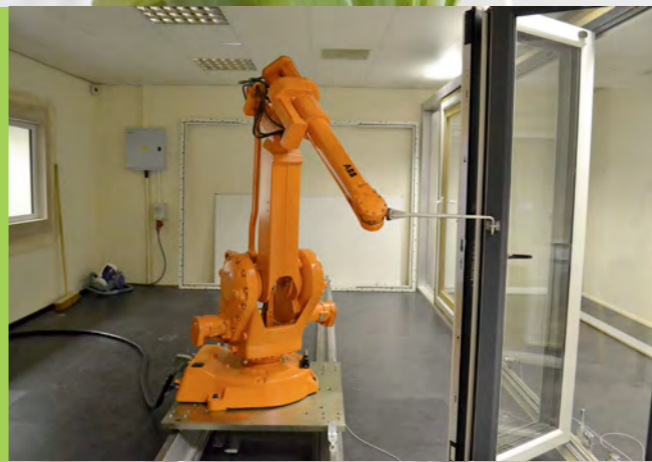
Built to create the perfect summer ambience, it's equally as important that our doors withstand the worst of the British winter weather.

We've rigorously tested our bi-folding doors to make sure they exceed the appropriate British Standards for weather performance.

We also subject our doors to a regime of robot cyclic testing in our purpose-built laboratory, making sure all mechanical parts will stand up to the repeated operation necessary for daily living.

Lead-free

Liniar profile is made from 100% lead-free PVCu – better for the environment and better for you and your family. You no longer have lead in your petrol or paint, so why choose to have frames containing lead?



“ We've invested in a robot to mechanically open and close the doors, really putting the Liniar bi-fold through its paces – we want to prove they're definitely built to last ”

A grand design

Bi-folding doors are becoming more popular than ever before, thanks in part to their regular appearance in television home make-over and lifestyle programmes.

Timber or aluminium are often perceived as the only materials that can be used for bi-folding doors, but doors made from lead-free PVCu can actually offer many more benefits:

- Smoother operation
- Higher thermal efficiency
- Lower maintenance
- Can perfectly match your other doors and windows

With Liniar's foiled woodgrain-effect options, your bi-folding doors can have the appearance of timber, without the need to repaint them each year.

If you choose our flat grey frames, your bi-folding doors will rival the most contemporary aluminium range on the market, keeping your home much warmer at a more cost effective price.

And Liniar's 'top of the range' ModLok™ bi-folding door offers even greater strength and rigidity, combining all of the structural benefits of an aluminium door set with the energy efficiency of PVCu.

Discover why more and more people are choosing Liniar's bi-folding doors to add an extra dimension to their homes.



Your home, your choice

The Liniar range offers complete flexibility, whatever the room or the size of opening you need.

Manufactured in our decorative sculptured profile, Liniar bi-folding doors are available in a wide variety of colours.

With options from two to seven panes, all with our beautiful, super-slim sightlines, you can also choose how many doors fold back to each side of the frame.

The Liniar standard bi-fold door range is available in a wide range of configurations whilst the Liniar ModLok™ bi-folding door range offers an even greater number, due to its additional strength and rigidity (see full table opposite).

A brand new concept in locking technology, ModLok™ has been developed by Liniar to enable even wider door configurations.



Combining aluminium reinforcing within the bi-fold doors and frame with a high security locking mechanism, the Liniar ModLok™ bi-fold offers all the structural benefits of an aluminium door set combined with the thermal benefits of PVCu – bringing you the best of both worlds.

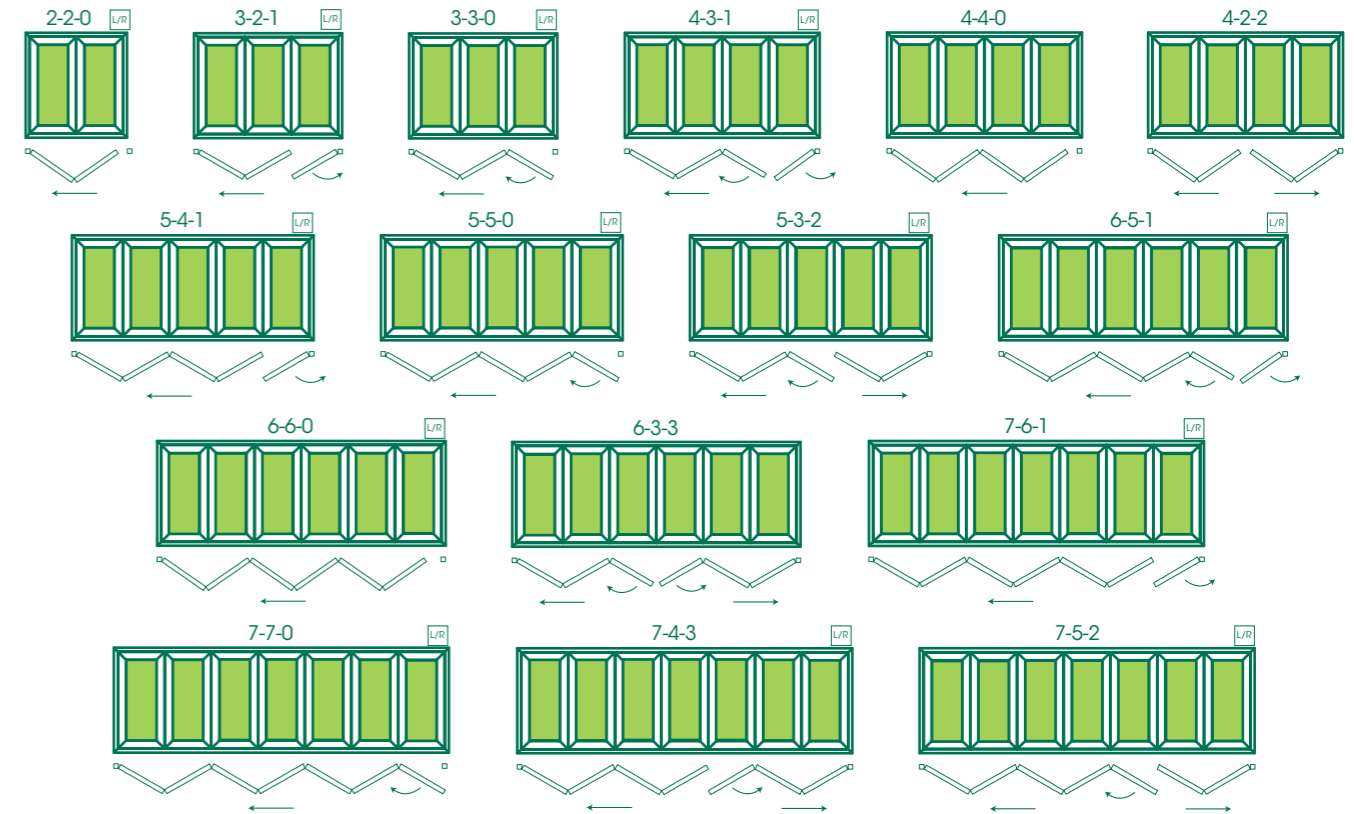
Our door pane numbering works like this:

- The first number shows the number of doors in total within the frame.
- The second number shows the majority of doors folding back to either left or right.
- The third number shows the balance of doors opening in the opposite direction.

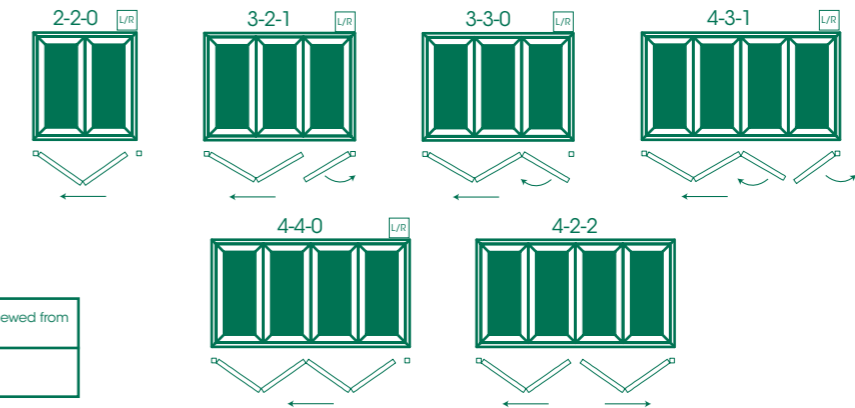
So, a 4-3-1 bi-folding door would be four panes wide, with three doors folding back to one side of the frame, and a single opening door on the other.



ModLok bi-fold configurations



Standard bi-fold configurations



Options	Left or right (majority) viewed from outside
	Open in or out

Designed for living

Liniar's bi-folding doors are crammed full of innovative design features.

Low maintenance

With a set of Liniar bi-folding doors you can rest assured that you won't need to spend hours looking after them to maintain their beauty.

Our 10 year frame guarantee gives you the peace of mind that the colours won't fade – and not only that, you won't need to treat or paint them each year to keep them in tip top condition.

Just an occasional wipe down with soapy water is all they need to keep them looking their best.



Add the 'wow' factor

Strong and secure



The shootbolt locking mechanism designed into each Liniar bi-folding door ensures the door is bolted firmly into the stainless steel track, maximising your security. Built in anti-lift features, anti-bump cylinders and optional anti-snap cylinders combine to bring you peace of mind.

Liniar's bi-folding door range is also available with ModLok™, a new concept in locking technology.

ModLok™ is a highly innovative combined reinforcing and locking mechanism, bringing additional strength and rigidity to the doors and enabling you to have even wider configurations of bi-folding doors. ModLok™ also offers enhanced security features including 3 opposing hooks and 2 shootbolts built in to every master door, plus 2 anti-lift shootbolts on every slave door.

The Liniar ModLok™ bi-fold offers all the structural benefits of an aluminium door set combined with the thermal benefits of PVCu.

Innovation

We've added slim hinges with the fixings hidden inside, not only maintaining the sleek lines but enhancing security as they can't be unscrewed from outside.

We wanted to offer a low threshold, without the need for expensive and messy excavation, so we designed our own clever solution.

We've even designed folding keys, to avoid any problems with keys being left in the locks during operation – it's often the small things that make a huge difference.

Family friendly

The Registered Design protected Liniar low-threshold option creates a seamless entrance and exit, making it ideal for family homes. An optional tray to seat the low threshold creates an easy-access ramp for wheelchairs and prams.

Ultra-low, the Liniar threshold measures just 24mm at its highest point, with silver or gold finish available to perfectly complement the door hardware.

Standard bi-fold



ModLok™ bi-fold



Uniquely designed

We've taken steps to protect our designs to ensure only our customers get all the benefits that come with choosing Liniar:

Community Designs	Patents
• 1680125-0001	• 1004047.5
• 1680125-0002	• 1004034.3
• 1680125-0003	• 1003001.3
• 1680125-0004	• 1306594.1

Super smooth action

Your bi-folding doors are engineered to give you the reassurance that they won't bend or warp – whilst the super smooth rolling action makes them feel incredibly light.

Ergonomic handles are built in to each hinged section, making the doors easy and safe to operate for all age groups.

Liniar's patented roller mechanism is hidden inside each door, maintaining its sleek lines and giving all Liniar doors the most effortless glide action on the market.

Discreet magnets ensure that when the doors are folded back, they will remain securely in place.

And with our ModLok™ range, only the "master" door will open first, so no chance of spraining locks by trying to open the wrong door.

Add the 'wow factor





Open up your business

Not just for the family home, Linar bi-folding doors can bring a whole new dimension to your commercial or business property.

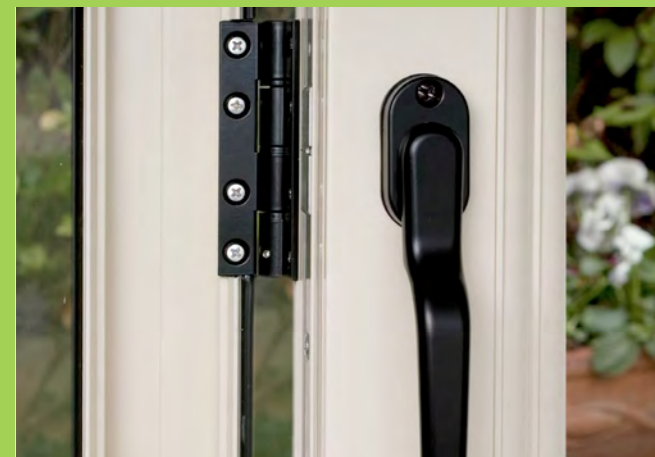
Maximise floor space at your pavement café by opening up an entire wall in the summer months, whilst knowing your energy efficient Linar bi-folding doors will also keep in the heat during the winter.

Or give your showroom a new lease of life by installing Linar bi-folding doors for ease of access together with the highest possible security.



Handles and hinges

Choose from white, black, chrome or gold handles and hinges to match your home and lifestyle.

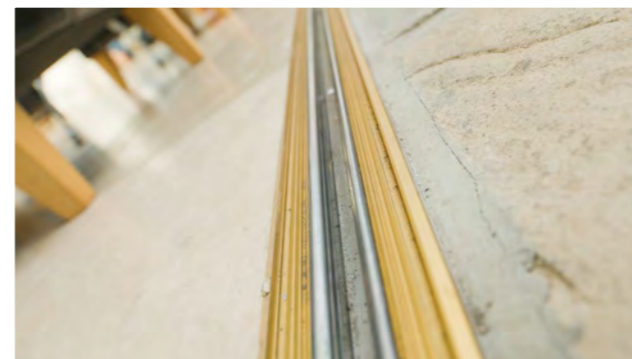


Accessories to suit you

Additional options to consider when choosing your Liniar bi-folding door.

Thresholds

The standard frame is available in colours to match your door - or choose our low threshold in silver or gold to co-ordinate with your door hardware.



Half threshold

For a seamless finish inside your home, choosing a half threshold means your flooring or tiling can be fitted flush to your door.



Easy access ramp

For wheelchair users, the low threshold is also available with a matching tray, creating an easy access ramp.



Folding Keys

Liniar's optional folding keys will fold back with your doors, staying hidden whilst being to hand - no more hunting around for lost keys!



Personalise your Liniar bi-fold

The Liniar range of bi-folding doors is available in a huge variety of colour options, with additional colours available upon request.

Our wood-grain foils give the authentic appearance of timber without the maintenance, and are precision factory-fitted, so you'd be forgiven for thinking your frames were actually made of wood.

The whole range comes with the Liniar 10-year frame guarantee against fading, cracking or warping.



The colours shown in this brochure give an indication only. No guarantee can be given that they will exactly match the product. Ask your sales representative for a Liniar colour swatch.

Additional colours are available to order as specials

Liniar's different

The newest brand of PVCu frames on the market, Liniar was created by bringing together some of the window industry's most experienced and forward thinking designers with over 500 years of industry experience between them.

With a focus on research, development and design, Liniar continues to push the boundaries when it comes to product innovation.

Our innovation team wanted to create a serious alternative to aluminium or timber bi-folding doors, one that could offer higher energy efficiency and lower maintenance costs. So we designed the Liniar bi-fold range from scratch, looking at every aspect from manufacture, through installation and continued use.

Liniar isn't constrained, either by history or by corporate politics. Privately owned, with a flat structure, we're able to respond to customer demands quickly and effectively, giving the brand a well-deserved reputation of excellence within the windows, doors and roofs industry.

Embedded in our culture is an ethos of constant innovation and development, which means Liniar customers always have access to the most forward-thinking products on the market.

Made in Britain

Unlike many of our competitors, Liniar PVCu profile is made in the heart of Britain.

Our extrusion facility in Derbyshire boasts the largest mixing plant in Europe, and continued investment in the factory, facilities and research and development keeps Liniar at the forefront of innovation.



7 great reasons to choose Liniar

Innovative - the only entirely new PVCu window and door profile system to be developed in the last 10 years

Energy efficient – designed from scratch to achieve the pinnacle of thermal performance and retain more heat in your property

Safe and secure – engineered with built-in security features and approved by independent testing facilities

British made – frames are extruded in our state-of-the-art factory in the heart of Derbyshire

Lead free – all Liniar profiles are extruded using materials that are 100% lead free

Quality assured – backed with ISO 9001 accreditation for your peace of mind

Guaranteed – all Liniar frames are guaranteed to not warp, split or discolour for a minimum of 10 years



Your Liniar stockist is:



Eco Window System Ltd

Unit 2, Willowbank Road
Hinckley
Leicestershire
LE10 0QP

Tel: 01455 635 230

Fax: 01455 891 230

Email: info@ecowindowsystems.co.uk